

2 0 2 6 — P R O F I L E

DAWN OF LIFE FOUNDATION



[Introducing DOLF](#) ●
[Engagement Strategies](#) ●
[Current Engagements](#) ●

[Impact and Results](#) ●
[Activities in Pictures](#) ●
[Contact Details](#) ●

About DOLF

Dawn of Life Foundation (DOLF) is a not-for-profit, non-governmental development organisation, that works with communities across Africa to empower them to achieve poverty-free, resilient, and sustainable futures.

DOLF was established in August 2003 with the idea of being a DOLPHIN – man’s best aquatic friend for poor and vulnerable communities in Africa. In 2006, it was incorporated with the Corporate Affairs Commission of Nigeria with Registration Number: CAC/IT/NO21233. DOLF is head-quartered in Port Harcourt, Rivers State, Nigeria.

We started in the Niger Delta region and have expanded our reach to other regions in Nigeria, and we are working towards extending our services to other African countries. We are working intensively to eradicate extreme poverty by providing quality, affordable and accessible healthcare, education, food, Livelihood/economic resilience.

Our organization has forged strategic partnerships with development agencies and international alliances such as The Global Fund (at Sub level), European Union (MPP), PACF UK, Professionals for Humanity, National, States and Local Governments. Also, we have been successful in working with stakeholders in rural communities, hard to reach areas and slums to find lasting solutions to diseases, illiteracy and hunger. We have helped create strong community institutions that support sustainable, community-led, community-driven initiatives to improve the lives of millions of people irrespective of their origin, faith, or gender.

Being indigenous and with our scientific approaches, our Team and over 500 volunteers have unique insights into the complex challenges people face today as well as the opportunities for tomorrow, and we create interventions based on these.

In 20 years +, DOLF has built the trust required to do this work even in the most fragile contexts.

This we have done quietly at community level and are now institutionalizing for scale and partnerships.





VISION

A world without poverty, where people live in dignity and participate in decisions that affect their development.



MISSION

To reduce poverty among the poor and vulnerable communities in Africa through the provision and increase in access to qualitative and affordable healthcare, education and livelihood.



CORE VALUES

Our core value forms the acronym dolphine

D - Dignity

P – Partnerships

N – Nurture

O - Openness

H – Honesty

E - Excellence

L - Learn

I – Innovation



OBJECTIVES

- To Provide qualitative and affordable healthcare service, reduce preventable diseases, improve nutrition and well being
- To facilitate education for human capital development, socio protection and inclusion
- Strengthen livelihoods, resilience, and the use of local resources for poor and vulnerable groups.
- To engage in Advocacy, strategic partnerships and systems strengthening.
- To Support research and innovative development practices and publications.



THEMATIC AREAS

Health

Supporting communities for wellbeing, quality healthcare and human survival

- Tb • HIV • Malaria • Sexual and Reproductive Health and Rights
- Leprosy and Buruli Ulcer • Nutrition • WASH
- Communicable diseases – Covid, Mpox, Cholera, Lassa Fever,
- Disability Issues (especially women and children)



Livelihood & Economic Resilience

- Food and Farm
- Micro-Enterprise & Small Business Support
- Market Access & Value Chain Development
- Community infrastructure and micro project

Education

Educating for human capital development and socio protection

- Dawn Of Life Academies
- Skills Development, Vocational and digital learning
- Scholarship fund.
- Textbook Plus Recycling project (TPRP).



Cross Cutting Services

- Women and Children.
- Environment.
- Gender/Human right/Gender based violence (GBV)

OUR APPROACH

Advocacy and partnerships

- Engaging with stakeholders (at all levels) to effect change and improve services.
- Empower communities and vulnerable groups to demand need-based services
- Partnership with funders, development agencies and government.

Research, Innovation & Technologies

- Research On Community Development Issues.
- Apply Innovative Approaches Including Digital Solutions To Create Sustainable Change.
- Innovate For Real Time Monitoring And Evaluation.

Strong Accountability And Monitoring

- Ensuring data quality and integrity

Integrated Service Delivery

- Focus and empower (Slum dwellers, Internally Displaced Persons (IDPs), orphans and vulnerable children, persons with disability, poor, flood-affected persons , Hard to Reach communities and other vulnerable persons.
- Ensure that persons with disabilities especially women and children get access to quality healthcare and other basic needs
- Homebased Care
- Workplace Sensitizations
- Clinical Screening
- Contact Investigation
- Counselling And Referrals
- Engagements And Capacity Building For Numerous Community Volunteers.
- Outreaches to vulnerable communities



OUR APPROACH

- Measurable health improvements
- Strengthened community systems
- Increased household resilience
- Scalable and replicable model

SPONSORS

- The Global Fund
- The Institute of Human Virology Nigeria (IHVN)S
- Association For Reproductive and Family Health (ARFH)
 - For Global Fund Funded Tb, HIV And Malaria Project.
- The Leprosy Mission Nigeria
- Civil Society in Malaria Control, Immunization and Nutrition (ACOMIN)
- European Union (MPP6&MPP9) For Rural Micro Project Activities In The Niger Delta
- National Agency for the Control of AIDS (NACA)
- National Tuberculosis, Buruli Ulcer and Leprosy Control Programme
- The Civil Society for The Eradication of Tuberculosis in Nigeria (Tb Network)
- Natures Renaissance International



ARFH



RSMWA
RIVERS STATE MINISTRY
OF WOMEN AFFAIRS



ASMWA
ABIA STATE MINISTRY
OF WOMEN AFFAIRS

Partners and Affiliates

- The Civil Society for the Eradication of Tuberculosis in Nigeria (Tb Network)
- Association of Care Service Providers to Older Persons in Nigeria (ACSPPOPIN)
- Civil Society for HIV and AIDS in Nigeria (CiSHAN)
- Professionals For Humanity
- Society For Elimination of HIV /Aids Among Children (SEHAC)
- RedAid
- National And State AIDS and STI Control Programme
- National And State Tuberculosis, Buruli Ulcer and Leprosy Control Programme
- National and State Malaria Elimination Programs
- Civil Society -Scaling Up Nutrition in Nigeria (CS-SUNN)
- The Civil Society Action Coalition on Education for All (CSACEFA)
- Stop Tb Partnership



CURRENT ACTIVITIES

- 1. Active Case Finding for Tuberculosis**
- (Global Fund Gc7 2024- 2026)
- 2. Community Programmatic Management of Drug-Resistant Tuberculosis (CPMDT)** -(Global Fund Gc7 2024-2026)
- 3. Prevention of Mother to Child transmission of HIV and AIDS (PMTCT)**
(Global Fund Gc7 2024- 2026)
- 4. Community System Strengthening**
(GF /NACA/ATM/C19RM /RSSH) 2024-2026
- 5. Malaria Impact Project** (2023-2026)
- 6. Risk Communication and Community Engagement (RCCE)**
For Mpox and Other Zoonotic Diseases – (2024-2026)
- 7. Enhancing Access to Health Services for People with Disability (Ease)**
- 8. Textbook Plus Recycling Project (TPRP)** -2024-2026
- 9. Women Improving Nutrition Through OFSP (Win) Project** 2024-2028

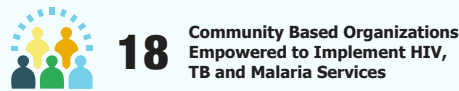
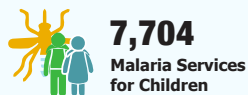
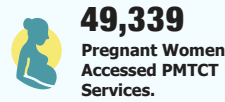
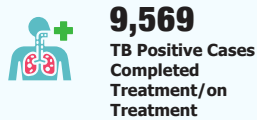
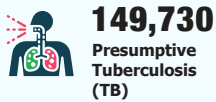
IMPACT AND RESULTS - YEAR 2025



Operation



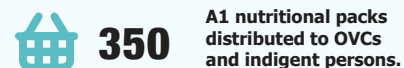
Health



Education



Food And Nutrition

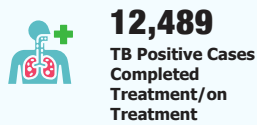
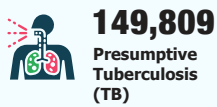


DOLF IMPACT AND RESULTS - YEAR 2024

Operation



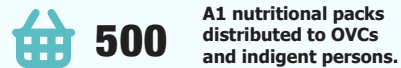
Health



Education



Food And Nutrition





GET INVOLVED

We engaging to translate years of multisectoral intervention into a globally credible, fundable, and scalable institution.

REASONS TO ENGAGE WITH US

- Proven multi-sectoral field experience
- Deep community trust and access
- Institutionalised governance
- Cost-efficient last-mile delivery
- Alignment with national and global frameworks

You may work with us as follows:

- Donate
- Volunteer
- Follow on social media

Contact Information



head office

Dawn of foundation .
No 51 PAMO university Road,
behind PAMO university of medical science,
Eelenwo New Layout, Port Harcourt, Nigeria.



FSPO:
BOX 7778,
Port Harcourt Nigeria.



zonal offices



North Central

Dawn of Life Foundation
Abuja Office
Second Floor, Suite Co8, Datunchi
Plaza, Plot 1 Asheik Jarma Street Off
Mike Akhigbe Road Jabi Abuja.



South South

Dawn of Life Foundation
No 51 Pamo University Road Behind
Pamo University Of Medical Sciences ,
Eelenwo New Layout Port Harcourt
Nigeria



South East

Dawn of Life Foundation No. 2
Health Center Road, World Bank
Housing Estate, Umuahia, Abia
State

email | website | phone | social

Contact Email:

info@dolfnet.org, dolfnet@ymail.com,
dolfnet@gmail.com

Website:

www.dolfnet.org

Phone number:

+234 803 723 8402, +234 803 876 2781,
+234 915 422 4280

Facebook

@DawnofLifeFoundation

Instagram

@dawn_of_life_foundation_dolf

X (twitter)

@DOLFONLINE1

LinkedIn

<https://www.linkedin.com/company/dawn-of-life-foundation-dolf/>

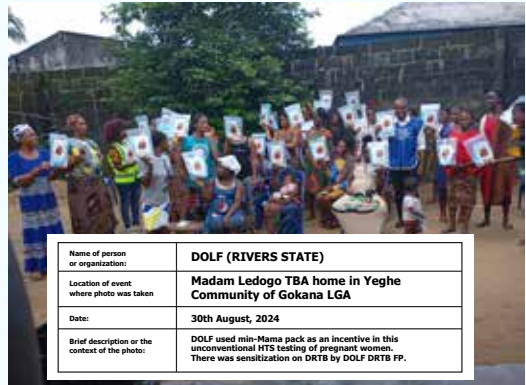
DOLF COMMUNITY PHOTOS



Name of person or organization:	DOLF (RIVERS STATE)
Location of event where photo was taken	Fulani migrant community Alesa Eleme
Date:	30th August, 2024
Brief description or the context of the photo:	Community outreach at the Fulani migrant community in Alesa, Eleme



Name of person or organization:	DOLF (RIVERS STATE)
Location of event where photo was taken	Ikpukulu village, Port-Harcourt
Date:	23rd May, 2024
Brief description or the context of the photo:	The oldest man in Ikpukulu Village Port-Harcourt collaborating with DOLF to end TB in his community



Name of person or organization:	DOLF (RIVERS STATE)
Location of event where photo was taken	Madam Ledogo TBA home in Yeghe Community of Gokana LGA
Date:	30th August, 2024
Brief description or the context of the photo:	DOLF used min-Mama pack as an incentive in this unconventional HTS testing of pregnant women. There was sensitization on DRTB by DOLF DRTB FP.



Name of person or organization:	ARFH (RIVERS)
Location of event where photo was taken	Ikpukulu village
Date:	23rd May, 2024
Brief description or the context of the photo:	A pupil displaying her notebook during Childhood TB outreach at Migrant Fishermen School Ikpukulu Village Port-Harcourt LGA.







Website:
www.dolfnet.org

Email:
dolfnet@gmail.com

Dawn of foundation .
No 51 PAMO university Road,
behind PAMO university of medical science,
Eledenwo New Layout, Port Harcourt, Nigeria.



© DAWN OF LIFE FOUNDATION