



**DOLF REPORTS**

· DAWN OF LIFE ·  
FOUNDATION ·

# CHILDHOOD TB & MEASLES



**RUBELLA  
VACCINE  
CAMPAIGN**



**DAWN OF LIFE FOUNDATION**

**RIVERS STATE**

[www.dolfnet.org](http://www.dolfnet.org)

# INTRODUCTION

Dawn of Life Foundation (DOLF), together with the Rivers State TBL program, collaborated with the Immunization Unit - Rivers State Primary Healthcare Management Board in the Measles-Rubella (MR) vaccination campaigns from 4th to 13th February 2026. The integration of childhood tuberculosis (TB) screening into Measles-Rubella (MR) vaccination campaigns is a strategic move to close the "detection gap". While MR campaigns have a massive reach, childhood TB often remains undiagnosed because its symptoms frequently mimic common respiratory infections. By leveraging the high-traffic environment of a vaccination drive, health systems can identify vulnerable children who might otherwise be missed by traditional clinic-based screening.

**Measles-Rubella Vaccine**

- Routine Immunization (0-23 months)
- Measles-Rubella (9months-14 years)
- HPV (Girls 9 years)

**HERE**

**FOR ALL CHILDREN  
0-14 YEARS**

**VACCINES ARE SAFE AND EFFECTIVE!**

#measlesrubellacampaign

NPHCDA toll free line 7722 [www.nphcda.gov.ng](http://www.nphcda.gov.ng) @nphcdang @nphcda nphcda Gavi World Health Organization UNICEF DOLF

# Bridging the Gap in Childhood TB:

Childhood Tuberculosis (TB) remains a significant, yet often overlooked, contributor to global pediatric mortality, primarily due to the challenges of early detection and under-reporting. At the same time, Immunization campaigns are among the most effective public health initiatives, consistently attaining high coverage and reaching even hard-to-reach areas. The integration of Childhood TB screening into the MR campaign offered a transformative opportunity to maximize every contact a child has with the healthcare system, both in health facilities and outreach sites.



## GOAL OF THE INTERVENTION:

The primary objective of this intervention is to scale up childhood TB awareness and case detection by screening at MR vaccination sites.

## CHALLENGES:

Insufficient number of volunteers to ensure that every child vaccinated is also screened for TB.



# Why This Integration Matters



## ► - **Closing the Detection Gap:**

Systematic screening during a high-volume MR campaign ensures these cases are caught early.

## ► - **Operational Efficiency:**

By utilizing the existing infrastructure and social mobilization of the MR campaign, health systems can screen thousands of children for TB without the cost of a standalone program.

## ► - **Patient-Centered Care:**

This integration creates opportunities for families to access preventive immunization and TB diagnostic screening in a single visit, thereby reducing the burden on families.

Our major achievements in this intervention are:

- Successfully integrated Childhood TB into immunization campaign for the first time.
- Identified 3118 childhood TB presumptive cases with 147 positive cases notified.
- Childhood TB contributed 16% to the total number of cases notified in February 2026.
- Scale up of Childhood TB awareness among caregivers and children.



# ACTIVITIES

1

DOLF in-house  
planning meeting

2

Planning meeting with the  
Rivers State TBL program, TBLs,  
and KNVC during the quarter 4,  
2025 Review meeting

3

Integration meeting at the LGA  
level between the TBLs and the  
immunization team

4

Outreaches in schools,  
orphanage homes, and fixed  
outreach posts

5

Daily review  
meetings

6

Daily WhatsApp  
reporting

7

Activity reporting



# Activities Conducted:

“

*Part of our goal was to key into the measles rubella campaign to scale up childhood TB awareness and case-finding...*

01



# Activities Conducted:



## 02

### **DOLF In-house Planning Meeting:**

DOLF management, upon seeing the advert on Measles Rubella, decided to key into the campaign to scale up childhood TB awareness and case-finding. During our planning meeting, we encouraged all cluster coordinators to sell this idea to their TBLs while DOLF management presents this initiative to the Rivers State TBL program. This initiative was presented to the State TBL, who embraced it and asked the TBLs to reach out to their MOHs and the immunization team. Our specific plans for the campaign were:

- Have our CTHWs join the MR Teams.
- DOLF to assign an additional 2 volunteers attached to 2 fixed post outreach sites to expand our coverage during this campaign.
- A WhatsApp platform created for real-time and daily reporting of activities.



# Activities Conducted:

# 03

## State TB Program And Partners Planning Meeting:

This initiative was presented to the state TB team during the quarter 4, 2025, Review meeting. The state team and partners accepted this initiative. Together with the TBL program manager, State TB M&E officer, KNCV PM, ARFH Casecade Coordinator, we designed a reporting tool on Ms. Excel, which was reproduced on Google Form by the Rivers State M&E officer. This harmonized reporting tool has an indicator on BCG immunization status for each child screened for TB.



Major challenges envisaged for the week were lack of presumptive registers, treatment cards, and sample request and result forms. KNCV and DOLF agreed to support the campaign with 150 copies of registers to ensure that the generated data are properly captured and secured.





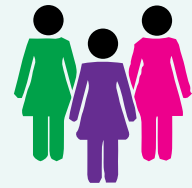
**Outreaches in Schools,  
Orphanages, and Churches.**



**Outreaches in Some  
Hard-to-reach Areas**



**Daily Reporting  
on Google Sheets**



**Sensitization of  
Women Groups**



**4 Days of Mop-up  
Activities.**



**Deployment  
of PDX Machines  
in Some Outreaches**



**Daily Review  
Meetings**



# Data Summary

CHILDHOOD TB DATA SUMMARY								
S/N	LGA	PRESUMPTIVES			POSITIVES			
		MALE	FEMALE	TOTAL	MALE	FEMALE	TOTAL	
1	ABUA/ODUAL	131	130	261	0	0	0	
2	AHOADA EAST	127	124	251	21	27	48	
3	AHOADA WEST	66	68	134	0	0	0	
4	AKUKU-TORU	96	106	202	1	0	1	
5	ANDONI	34	35	69	0	0	0	
6	ASARI-TORU	88	87	175	0	0	0	
7	BONNY	53	73	126	0	0	0	
8	DEGEMA	13	13	26	0	1	1	
9	ELEME	141	132	273	8	6	14	
10	EMOHUA	46	46	92	1	0	1	
11	ETCHE	53	41	94	0	1	1	
12	GOKANA	5	9	14	0	0	0	
13	IKWERRE	4	1	5	0	0	0	
14	KHANA	111	90	201	2	3	5	
15	OBIO/AKPOR	76	79	155	4	3	7	
16	OGBA/EGBEMA/NDONI	125	107	232	18	17	35	
17	OGU/BOLO	18	9	27	2	0	2	
18	OKRIKA	49	41	90	1	2	3	
19	OMUMA	18	25	43	1	1	2	
20	OPOBO/NKORO	203	204	407	17	10	27	
21	OYIGBO	39	47	86	0	0	0	
22	PORT HARCOURT	42	62	104	0	0	0	
23	TAI	29	22	51	0	0	0	
	<b>TOTAL</b>	<b>1567</b>	<b>1551</b>	<b>3118</b>	<b>76</b>	<b>71</b>	<b>147</b>	

## Measles-Rubella Vaccine

- Routine Immunization (0-23 months)
- Measles-Rubella (9months-14 years)
- HPV (Girls 9 years)

**FOR ALL CHILDREN**  
**0-14 YEARS**

**HERE**



# Achievements

Our major achievements in this intervention are:



Successfully integrated Childhood TB into immunization campaign for the first time.

**16%**

contribution to the total number of cases notified in February 2026.

**3118**

childhood TB presumptive cases Identified



Scale up of Childhood TB awareness among caregivers & children

**147**

positive cases notified.

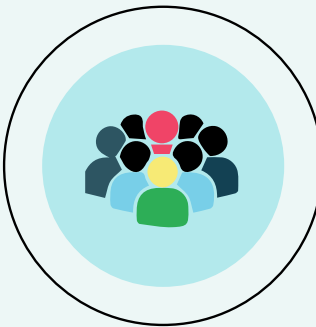


# Challenges



## SHORTAGE OF REAGENTS

Shortage of reagents in many testing sites led to delays in processing samples.



## INSUFFICIENT MANPOWER

Insufficient number of manpower to match the immunization team.



## LOGISTICS CHALLENGES

Lack of logistics to reach children in some hard-to-reach areas for both teams.

## Recommendations For Future Plan

- AFB should be used in testing sites in case of shortage of reagents.
- There should be plans to reach children in more hard-to-reach areas.

# Conclusion

The Childhood TB and Measles-Rubella campaign in Rivers State achieved its main objective of scaling up childhood TB case identification and vaccination coverage. The collaborative efforts between Rivers State TBL program, the Immunization unit of Rivers State Primary Healthcare Management Board, and Dawn of Life Foundation (DOLF) have bridged this gap. This success has led to innovation for future interventions.

DOLF remains grateful to the dedication of our CTHWs and other volunteers; the TBLs for the unwavering supportive supervision and daily reporting during this exercise.

The Childhood TB and Measles-Rubella campaign in Rivers State stands as a testament to the power of integrated community-led healthcare interventions. DOLF remains committed to sustaining this momentum of ensuring every child in Rivers State is screened for TB.



# PHOTOS

01



Map of Rivers State, Nigeria.



ACTIVITY PHOTOS ACROSS VARIOUS LOCAL GOVERNMENT AREAS





## AKUKU TORU



## AHOADA EAST





**OPOBO NKRO**

**OKRIKA**



(TBLS, DOLF LC, Radiographer, ARFH DEC), meeting with the MOH of Ogu-Bolo.

ACTIVITY PHOTOS ACROSS VARIOUS LOCAL GOVERNMENT AREAS

## Ogu-BOLO TB Team





## OGU-BOLO



ACTIVITY PHOTOS ACROSS VARIOUS LOCAL GOVERNMENT AREAS





05

## BONNY



## UMUMA





06





## Oro-Ibes' boms community women group, Sensitization and TB screening





# GOKANA





# ETCHE

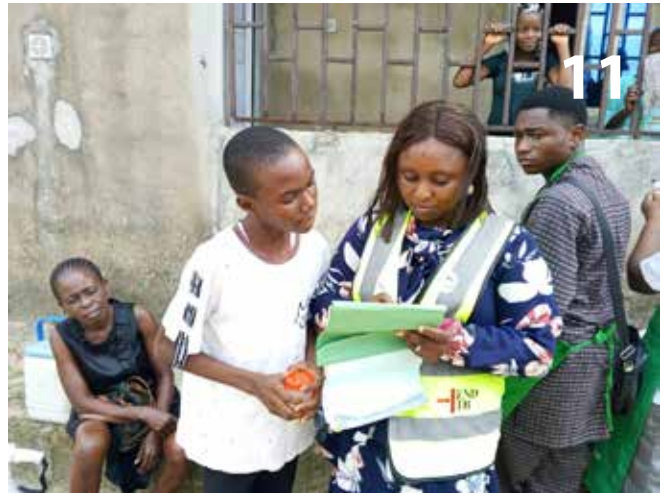


ACTIVITY PHOTOS ACROSS VARIOUS LOCAL GOVERNMENT AREAS

# Port-Harcourt Team







## OYIGBO LGA



## OGBA EGBEMA NDONI LGA





**A POST-EVENT REPORT  
PRESENTED BY  
DAWN OF LIFE FOUNDATION**

**Website:**  
[www.dolfnet.org](http://www.dolfnet.org)

**Email:**  
[dolfnet@gmail.com](mailto:dolfnet@gmail.com)

Dawn of foundation .  
No 51 PAMO university Road,  
behind PAMO university of medical science,  
Elelenwo New Layout, Port Harcourt, Nigeria.

